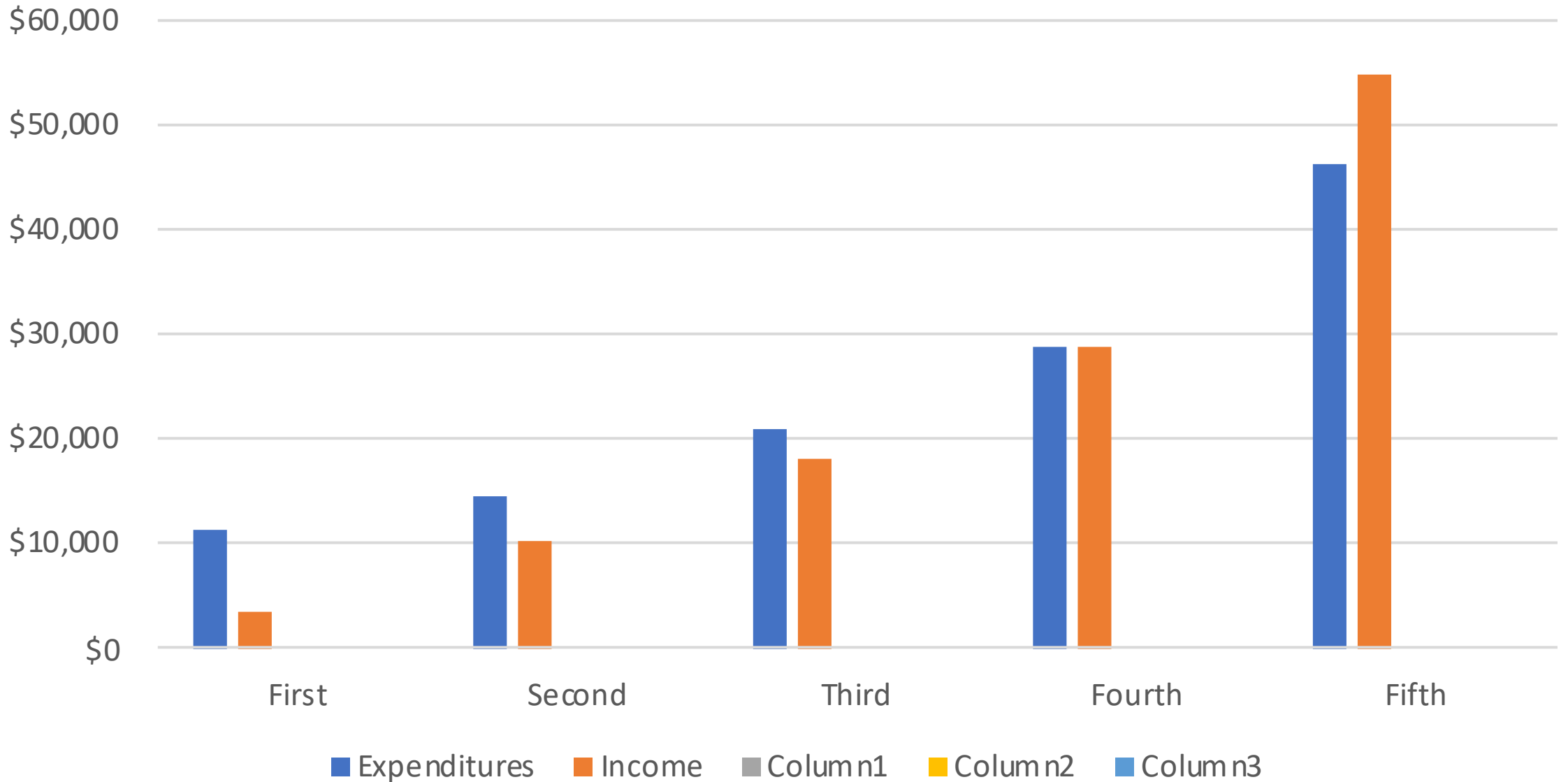


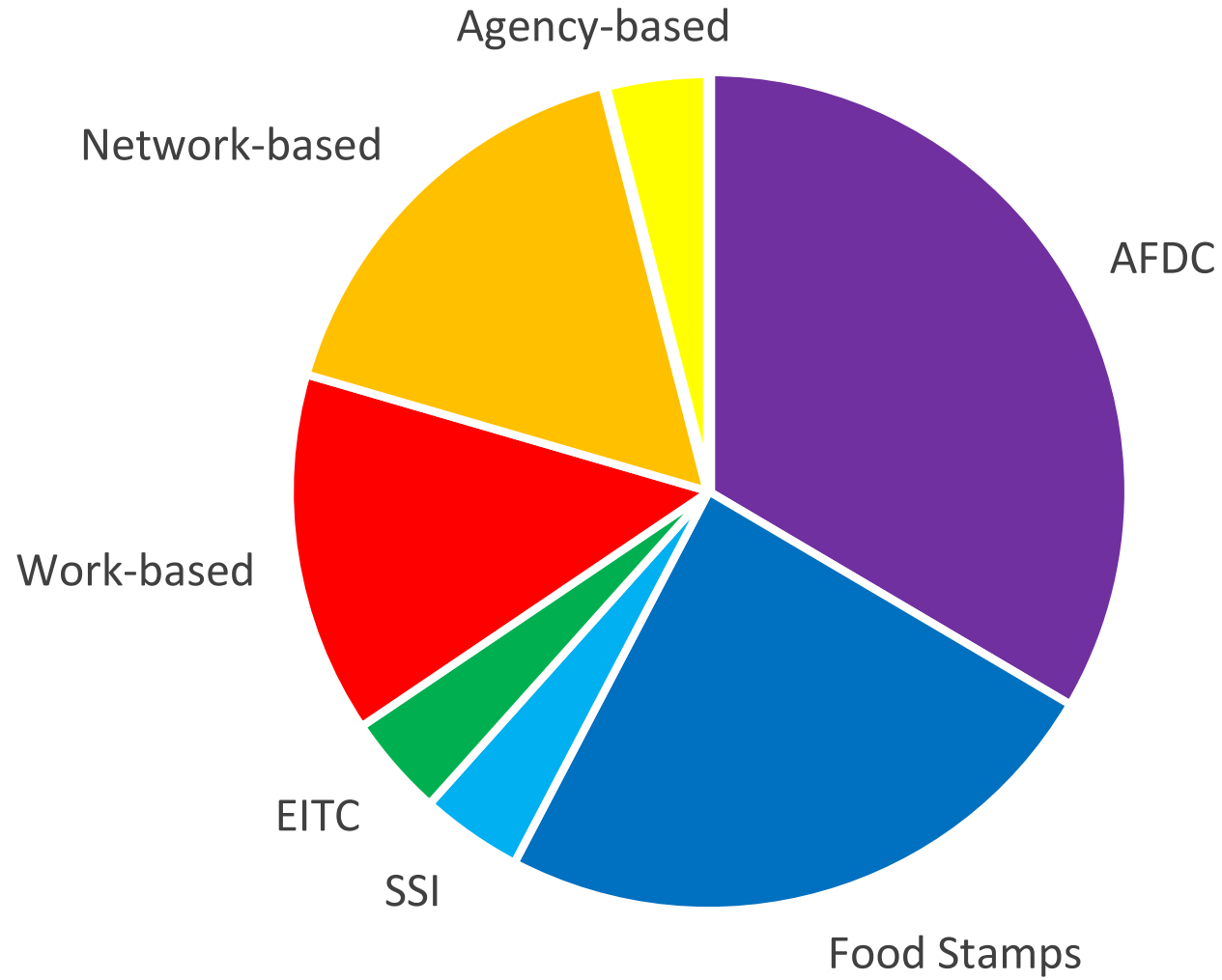
Expenditures and Income by Quintile



Expenditures and Income for 214 Welfare-Reliant Mothers

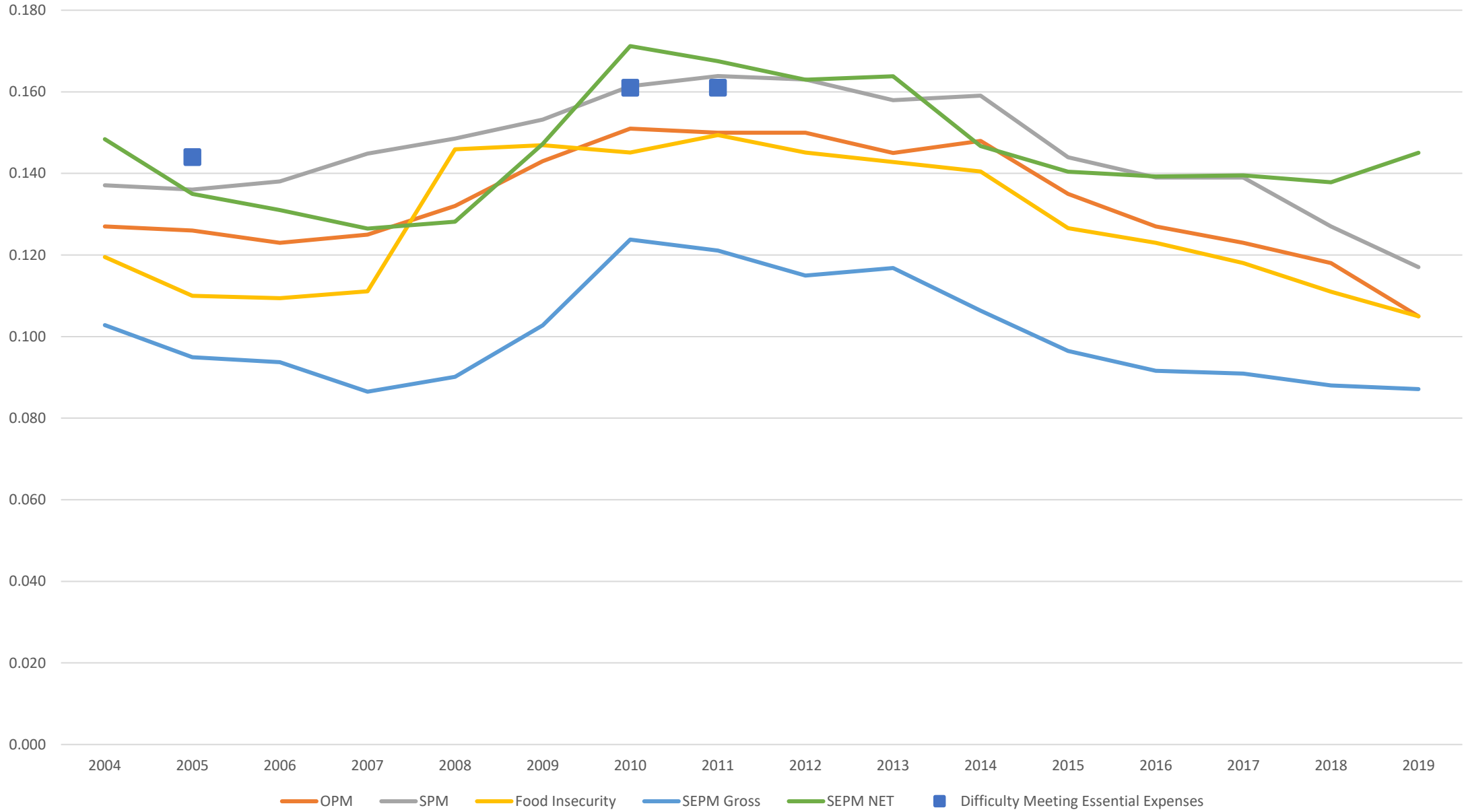


Survival Strategies of 214 Welfare-Reliant Mothers



■ AFDC ■ Food Stamps ■ SSI ■ EITC ■ Work-based ■ Network-based ■ Agency-based

Annual Rates of Poverty and Well-Being



Correlations Between Annual Rates of Poverty and Key Indicators of Well-Being,
2004-2019

	Food Insecurity	Unemployment Rate	Part-time for Econ Reasons
OPM	0.9	0.89	0.9
SPM	0.89	0.85	0.86
SEPM Gross	0.76	0.82	0.86
SEPM NET	0.64	0.76	0.79

Ratio of Hardship Rate for Children Over Hardship Rate for the Elderly

